

Section II – Part C Preliminary Plat

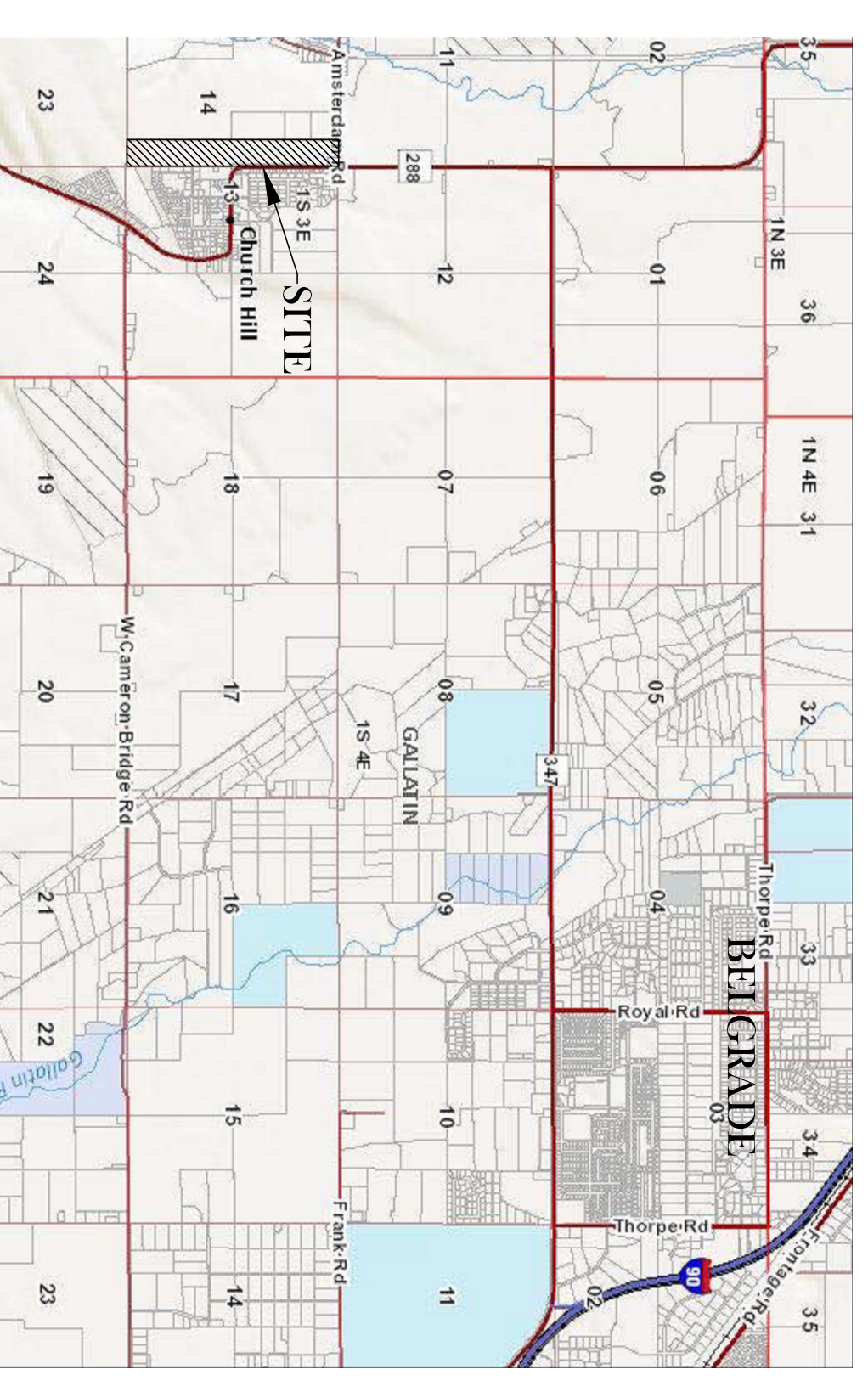
a. 11x17

b. 24x36 (Under Front Cover)

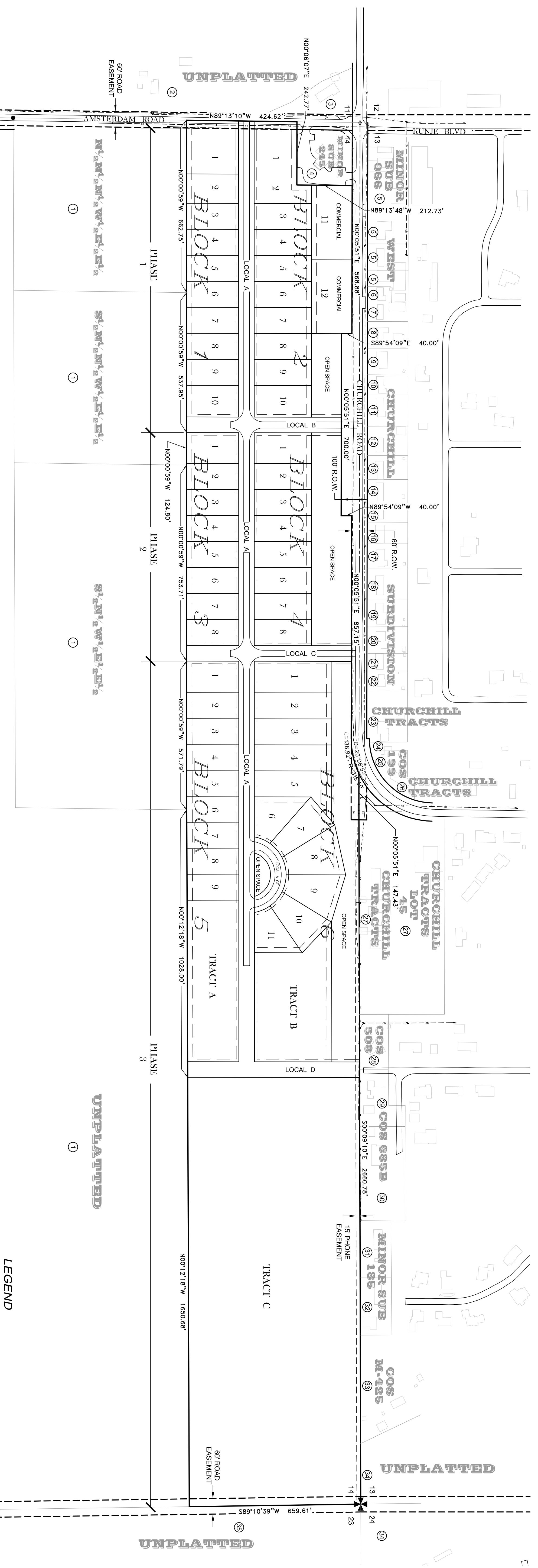
VILLAGE AT AMSTERDAM

Preliminary Plat

IN THE E¹/₂ E¹/₂ E¹/₂ OF SECTION 14, T1S, R3E, P.M., M.
GALLATIN COUNTY, MONTANA



VICINITY SKETCH
NOT TO SCALE



LEGAL DESCRIPTION:

E¹/₂E¹/₂ of Section 14, Township 1 South, Range 3 East, P.M., M., Gallatin County, Montana, EXCEPTING THEREFROM all of Lot 1 of Minor Subdivision No. 245 on file and of record in the office of the County Clerk and Recorder of Gallatin County, Montana.

RECORD OWNERS OF LOTS AND TRACTS ADJOINING THE PROPOSED SUBDIVISION

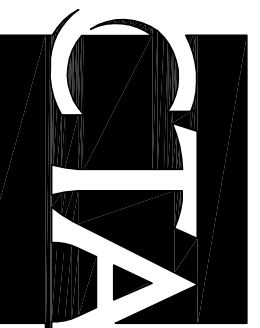
- | | |
|---|--|
| ① STRAIGHT UP | ② KRIGSH, TERRY MARK & DAWN |
| ② EKKMAN DONNA L, DYK, CHARLES DYK, DWIGHT EDWARD - ALL UND 1/3 INT | ③ DAVE WILLIAM JR & CATHY A |
| ③ DUFFIN ROBERT L & LINDA D | ④ LANGLEY ROBERT D |
| ④ MANHATTAN STATE BANK | ⑤ DYKMAN KAREN |
| ⑤ DWYSTERHOUSE, HENRY & KAREN | ⑥ CONRAD, DARRYL W & LYNETTE R |
| ⑥ MARWERDEL, CHARLES DAVID | ⑦ THE SKYS THE LIMIT REV TRUST |
| ⑦ KAMERNAN, CLARENCE & CLARENCE JOHN | ⑧ BETHEL, CHRISTIAN REFORMED CHURCH |
| ⑧ NEWSTROM, KRISTOPHER LEE | ⑨ HOEKEMA, RONALD & BEVERLY |
| ⑨ BEYERS, BRENOON A | ⑩ KAMERNAN, WESLEY C & HELENA |
| ⑩ SEVOEL, MICHAEL R & LINDSEY R | ⑪ FLICKEMA, MATTHEW & WEDENHAR, CAROL J |
| ⑪ KIMMELER, EDWIN & BONNIE | ⑫ KAPRS, JOHN ALLEN |
| ⑫ LENNINGER, PAUL | ⑬ KOENIGK, EDWARD & KAY V |
| ⑬ HANN, JAMES A & MARY L | ⑭ USAC, DAVID M & ALLISON |
| ⑭ BENNETT, WALTER E & DARCY ANN | ⑮ VANDERMOLEN, HAROLD R JR TR DTD 2/1/12 |
| ⑮ THIBEAULT, TISSON & AMBER | ⑯ VANDERMOLEN, CARL H |
| ⑯ BEHAR, GENNY R | |
| ⑰ DROGE & SONS | |
| ⑱ NAGEL, DANIEL A & KERRIL L | |
| ⑳ SMIT, CURTIS L & DEBORAH R | |

PRELIMINARY PLAT ACREAGE:
8.3 ACRE± (ROADS, ROW)
37.9 ACRE± (LOTS, RESIDENTIAL)
24.9 ACRE± (LOTS, WITH SANITARY RESTRICTIONS)
6.7 ACRE± (OPEN SPACE)
77.4 ACRE± (TOTAL)



- LEGEND**
- BOUNDARY LINE - THIS SURVEY
 - BOUNDARY LINE ADJACENT PROPERTIES
 - - - SECTION LINE
 - - - EASEMENT AS NOTED
 - ✱ SECTION CORNER
 - ◀▶ QUARTER CORNER

REVISIONS:

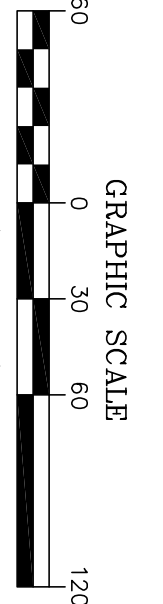
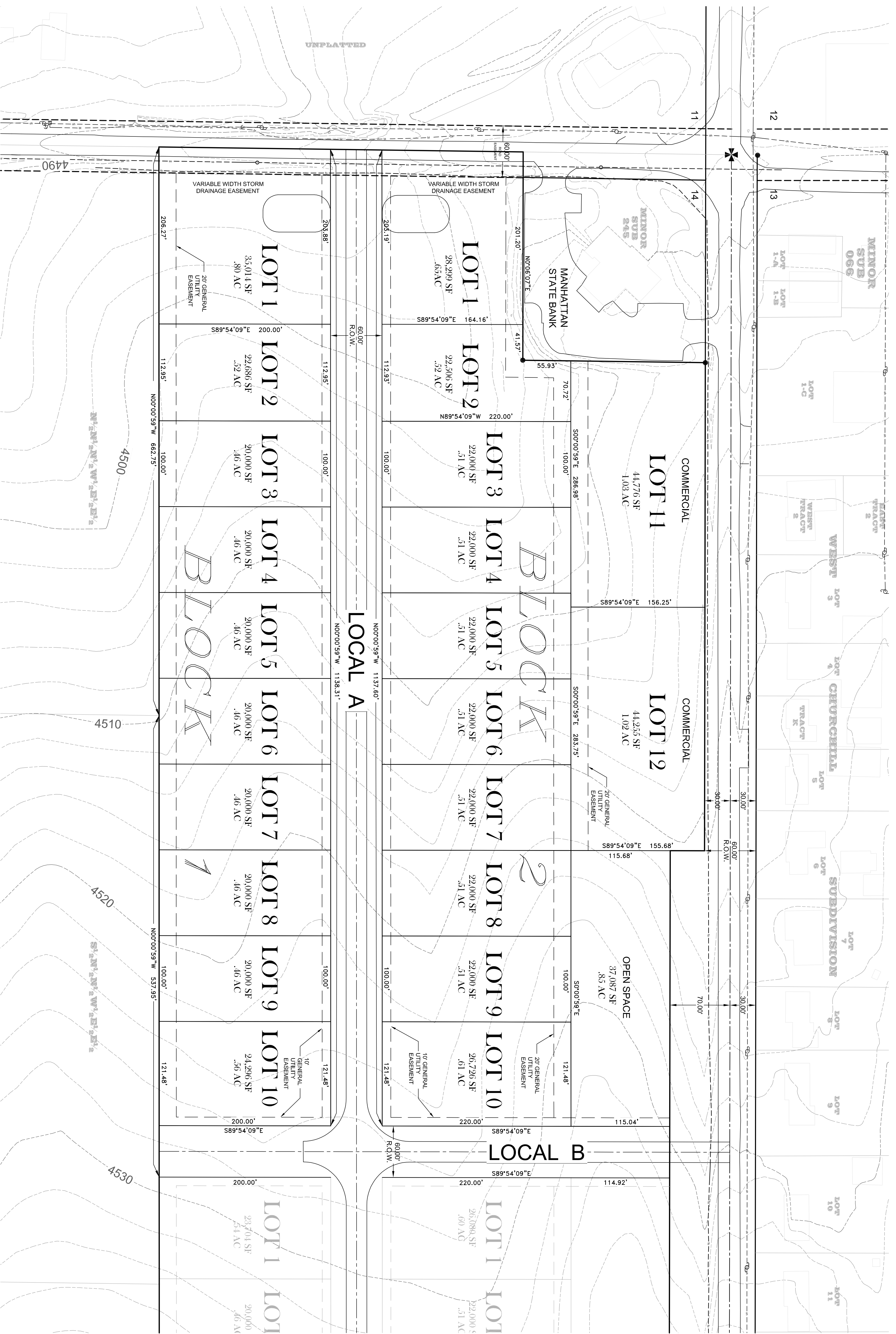

 DRAWN BY: EYDOR
 CHECKED BY: GSB
 DATE: 2/9/15
 CTA #: AMSVILLE
 CADD FILE: AMSTV131

1/2	Sec	T	R
14	1S	3E	

PRINCIPAL MERIDIAN
MONTANA
GALLATIN COUNTY

VILLAGE AT AMSTERDAM
PRELIMINARY PLAT

OVERALL SITE
SHEET 1 OF 4



REVISIONS:

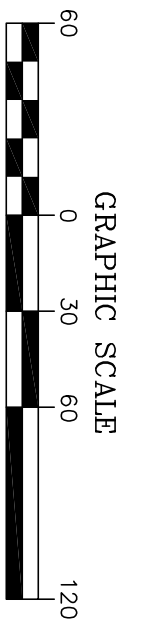
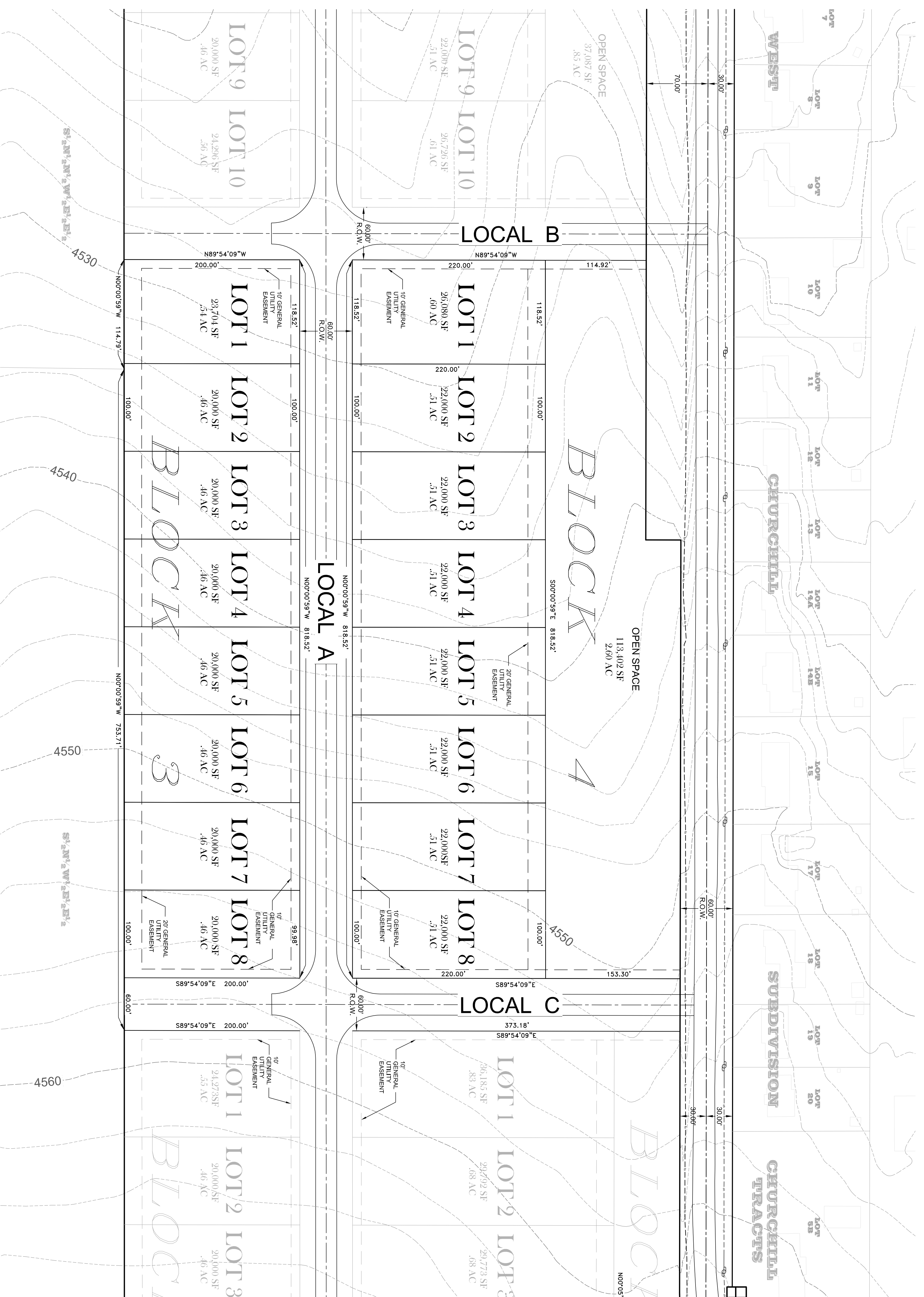
CTA
123 South Main
Liveston, MT 59047
406.222.2114

DRAWN BY: EVIDER
CHECKED BY: GSB
DATE: 2/9/15
CTA #: AMSVILLE
CADD FILE: AMSTV131

1/2	Spec	T	R
1/4	14	15	3E

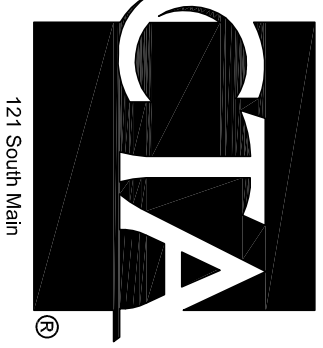
PRINCIPAL MERIDIAN
MONTANA
GALLATIN COUNTY

VILLAGE AT AMSTERDAM
PRELIMINARY PLAT



CONTOUR INTERVAL = 2 FEET

REVISIONS:



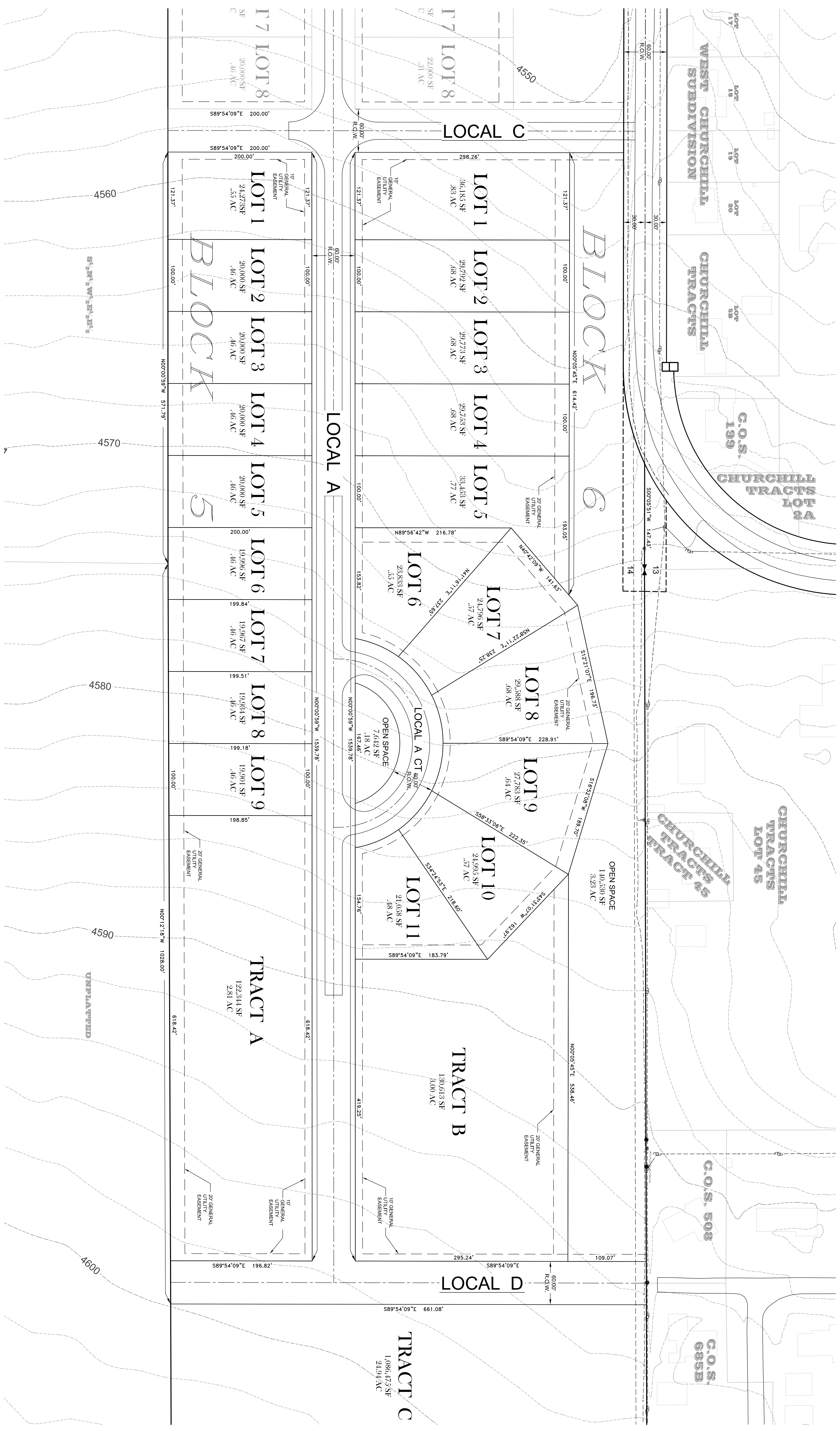
DRAWN BY: EYDHR
CHECKED BY: GSB
DATE: 29/15
CADD FILE: AMSTV131

PRINCIPAL MERIDIAN
MONTANA
GALLATIN COUNTY

VILLAGE AT AMSTERDAM
PRELIMINARY PLAT

PHASE 2

SHEET
3 OF 4



CONTOUR INTERVAL = 2 FEET

REVISIONS:

CTA
 123 South Main
 Livingston, MT 59047
 406.222.2114

DRAWN BY: EVIDER
 CHECKED BY: GSB
 DATE: 2/9/15
 CTA #: AMSVILLE
 CADD FILE: AMSTSV131

1/2	Spec	T	R
X	14	1S	3E

PRINCIPAL MERIDIAN
 MONTANA
 GALLATIN COUNTY

VILLAGE AT AMSTERDAM
 PRELIMINARY PLAT